

- ALPACA FIBRE ANALYSIS

Client
 Manna-Gum Alpacas
 PO Box 31
 Marnoo VIC 3387
 Group ID. Full Group

Date Sample Taken - 31/10/2017

Contact :- Micron Man
 Our Phone (08)94181733
 P.O. Box 1423
 Bibra Lake W.A. 6965

Test No. MNN71117

Wool Growth - months

Age at Sample Date - months

Name : **MGA295TALISMAN**

IAR Number : 215351
 Micron Deviation : -1.2 um
 >30 : 2.4 %

Micron : 19.2 um
 SD : 4.6 um
 CV : 24.0 %
 CE : 3.0 %
 SF : 19.2 um
 CF : 97.6 %
 CRV : 41.0 Deg/mm
 SDC : 32.2 Deg/mm

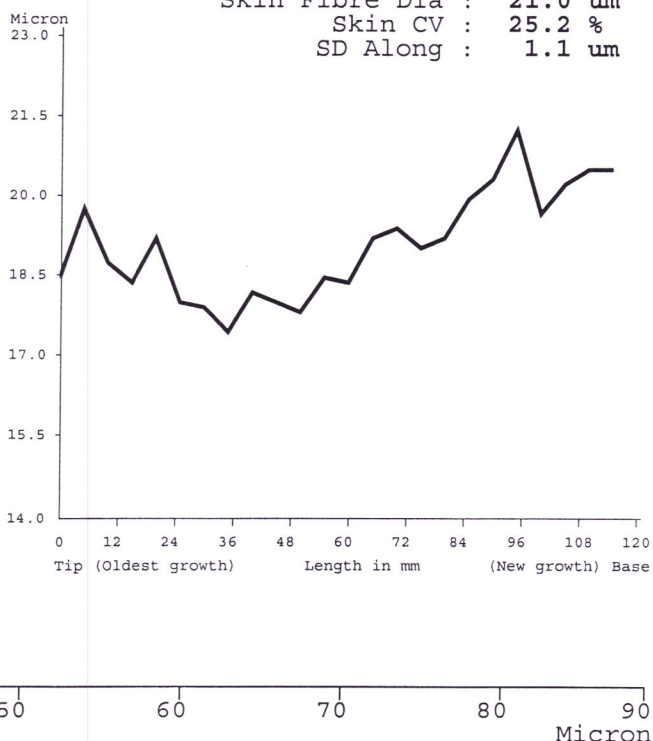
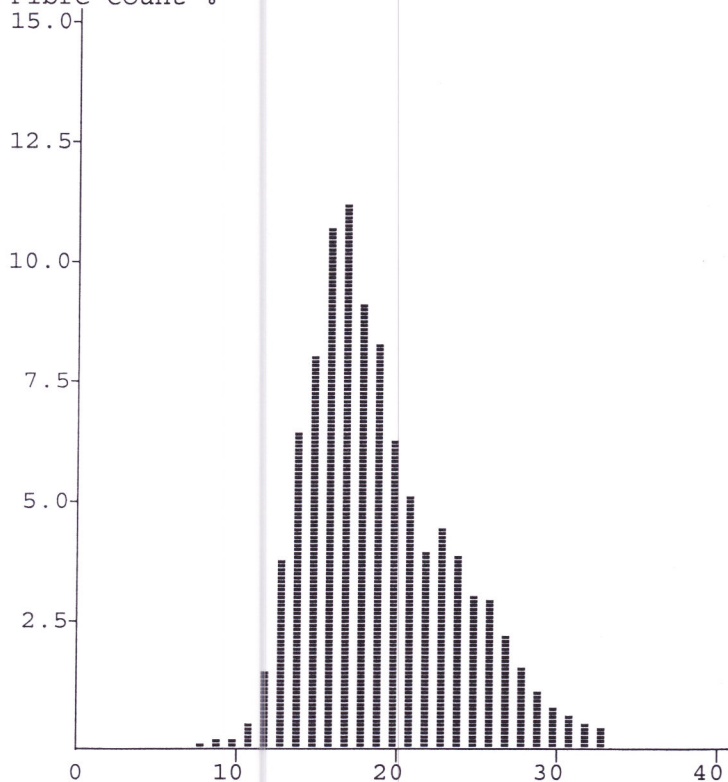
Total Fibres counted : 3953

OFDA2000 Alpaca Calibration : Trim High ON
 GCF @ 20 um : 0.6 um

Micron Profile Graph

Staple Length : 115.0 mm
 Finest Point From Tip : 35.0 mm
 Mean Fibre Ends : 20.4 um
 Minimum Fibre Dia : 17.9 um
 Maximum Fibre Dia : 22.0 um
 Skin Fibre Dia : 21.0 um
 Skin CV : 25.2 %
 SD Along : 1.1 um

Fibre Count %



EXPLANATION OF TERMS

- FD : Overall average Fibre Diameter measured in micron (um).
- SD : Standard Deviation, measures the distance either side of the average fibre diameter where approx 2/3 of the fibre diameters lie.
- CV : Coefficient of Variation = SD as a percentage of the average micron
- CE : Coarse Edge. The percentage of fibres that lie over 10 microns greater than the average fibre diameter.
- CF : Comfort Factor. The percentage of fibres less than 30 microns
- SF : Spinning Fineness. Combine Micron & CV to a single number to represent the spinning quality expressed in microns.
- >30 : The percentage of fibres greater than 30 microns.
- CRV : Fibre Curvature is the average curvature or bending over one millimetre length. It is related to crimp frequency and is measured in degrees per millimetre (Dg/mm).
- SDC : Standard Deviation of Curvature is the variation of curvature for the above measurement. SDC is related to crimp definition and measured in degrees per millimetre (Dg/mm).
- TRIM : If sample is tested with Trim High ON, then the result is trimmed to 4 SD's above average FD. If sample average FD=22um and SD=5um then Trim High ON = 22+20=44um. Measurement above 44um is removed. Trim High OFF means no coarse tail trimming on the sample tested that gives a closer result to other instruments.
- GCF : Grease Correction Factor is the FD adjustment needed when measuring greasy Alpaca fibre - @ 20um-0.6um = 19.4um