

- ALPACA FIBRE ANALYSIS

Client

Ballark Ridge Alpacas
PO Box 359
Murgon QLD 4605

Date Sample Taken -

Test No. BLR30914

Contact :- Micron Man

Our Phone (08)94181733
P.O. Box 1423
Bibra Lake W.A. 6965

Group ID. FULL GROUP T HIGH ON

Wool Growth - 12 months

Age at Sample Date - months

Name : **AZZURA OREO**

IAR Number : 191484
Micron Deviation : +3.7 um
>30 : 23.8 %

Micron : 27.3 um
SD : 7.0 um
CV : 25.6 %
CE : 8.8 %
SF : 27.7 um
CF : 76.2 %
CRV : 14.3 Deg/mm
SDC : 17.4 Deg/mm

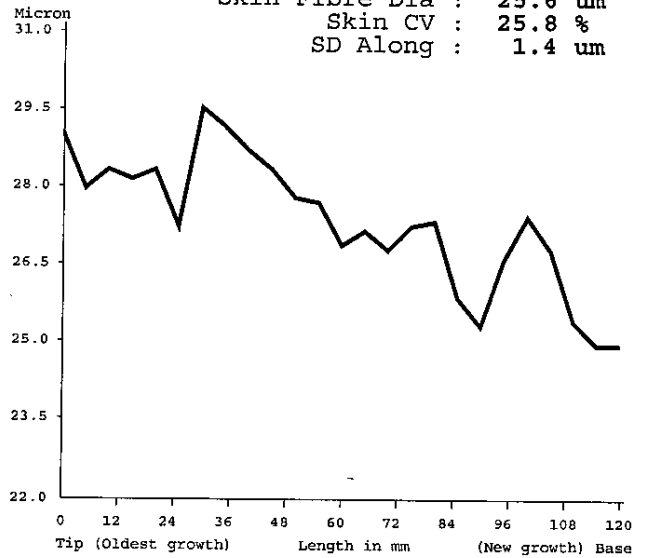
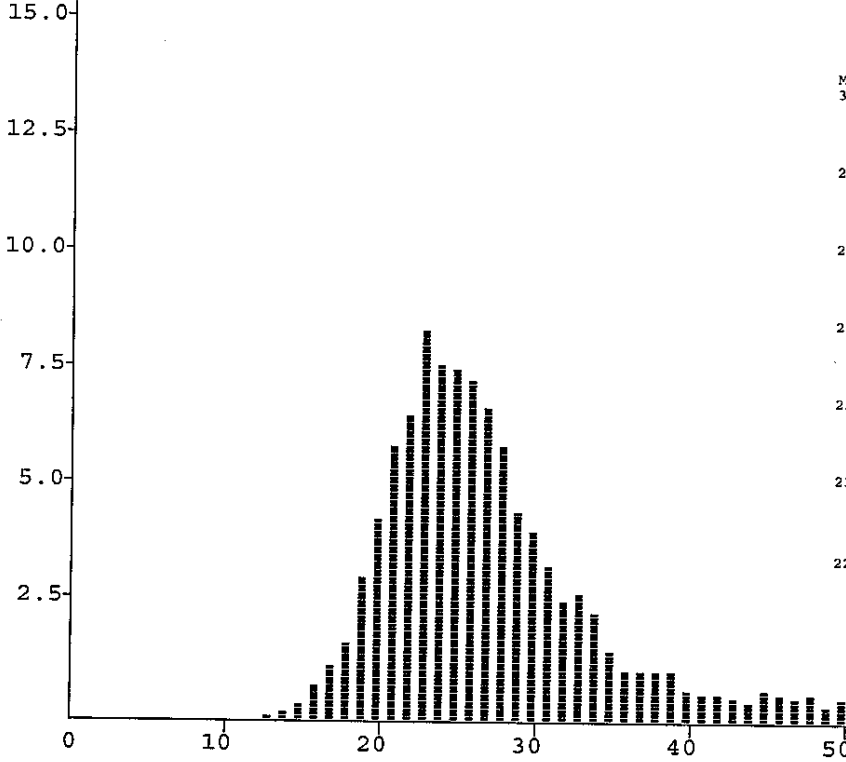
Total Fibres counted : 5648

OFDA2000 Alpaca Calibration : Trim High ON
GCF @ 20 um : 0.6 um

Micron Profile Graph

Staple Length : 120.0 mm
Finest Point From Tip : 115.0 mm
Mean Fibre Ends : 27.5 um
Minimum Fibre Dia : 25.4 um
Maximum Fibre Dia : 30.4 um
Skin Fibre Dia : 25.6 um
Skin CV : 25.8 %
SD Along : 1.4 um

Fibre Count %



EXPLANATION OF TERMS

- FD : Overall average Fibre Diameter measured in micron (um).
- SD : Standard Deviation, measures the distance either side of the average fibre diameter where approx 2/3 of the fibre diameters lie.
- CV : Coefficient of Variation = SD as a percentage of the average micron
- CE : Coarse Edge. The percentage of fibres that lie over 10 microns greater than the average fibre diameter.
- CF : Comfort Factor. The percentage of fibres less than 30 microns
- SF : Spinning Fineness. Combine Micron & CV to a single number to represent the spinning quality expressed in microns.
- >30 : The percentage of fibres greater than 30 microns.
- CRV : Fibre Curvature is the average curvature or bending over one millimetre length. It is related to crimp frequency and is measured in degrees per millimetre (Dg/mm).
- SDC : Standard Deviation of Curvature is the variation of curvature for the above measurement. SDC is related to crimp definition and measured in degrees per millimetre (Dg/mm).
- TRIM : If sample is tested with Trim High ON, then the result is trimmed to 4 SD's above average FD. If sample average FD=22um and SD=5um then Trim High ON = 22+20=44um. Measurement above 44um is removed. Trim High OFF means no coarse tail trimming on the sample tested that gives a closer result to other instruments.
- GCF : Grease Correction Factor is the FD adjustment needed when measuring greasy Alpaca fibre - @ 20um-0.6um = 19.4um