



ALPACA FIBRE ANALYSIS

Client

Ravenswood Alpacas
2272 Queens Pinch Rd
Mudgee NSW 2850

Date Sample Taken - 13/10/2018

Test No. RAV81019

Contact :- Micron Man

Our Phone (08)94181733
P.O. Box 1423
Bibra Lake W.A. 6965

Group ID. Full Group

Wool Growth - 12 months

Age at Sample Date - months

Eartag : **STORMY**

Micron Deviation : -2.4 um
>30 : 12.6 %

Micron : 23.1 um
SD : 6.1 um
CV : 26.4 %
CE : 6.6 %
SF : 23.6 um
CF : 87.4 %
CRV : 25.1 Deg/mm
SDC : 24.3 Deg/mm

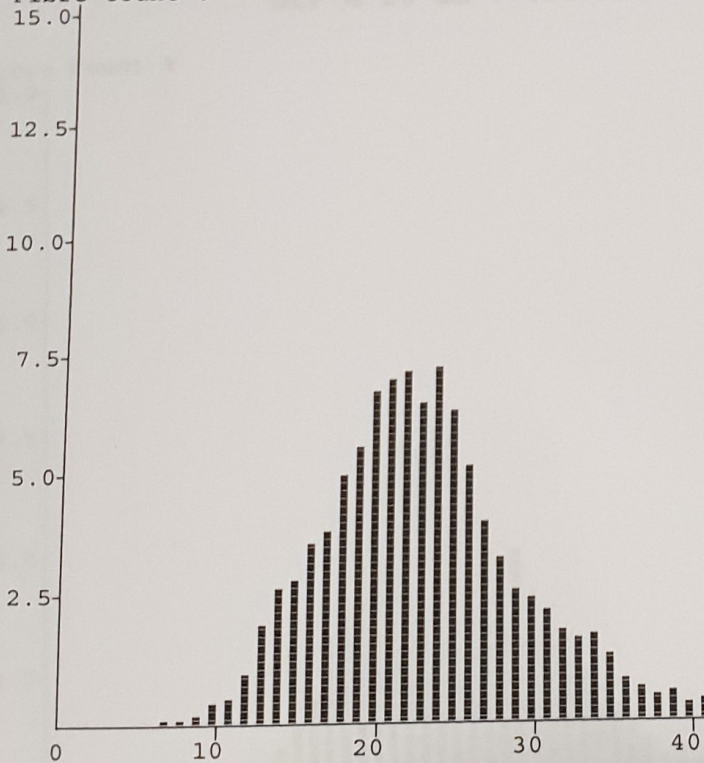
Total Fibres counted : 7656

OFDA2000 Alpaca Calibration : Trim High ON
GCF @ 20 um : 0.6 um

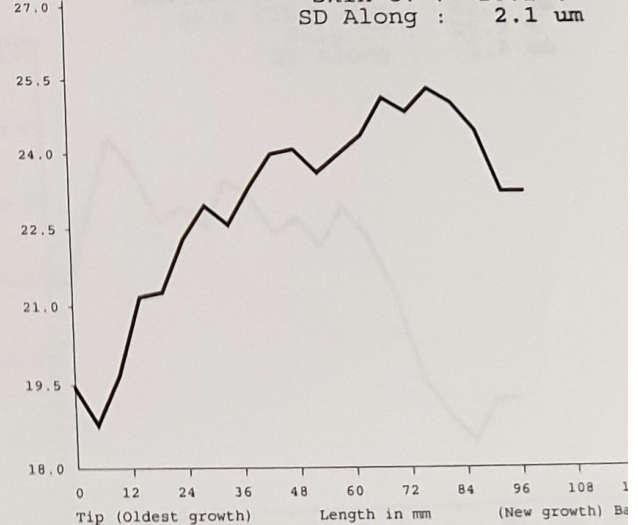
Micron Profile Graph

Staple Length : 100.0 mm
Finest Point From Tip : 5.0 mm
Mean Fibre Ends : 21.9 um
Minimum Fibre Dia : 19.0 um
Maximum Fibre Dia : 26.0 um
Skin Fibre Dia : 24.5 um
Skin CV : 26.1 %
SD Along : 2.1 um

Fibre Count %



Micron



EXPLANATION OF TERMS

- FD : Overall average Fibre Diameter measured in micron (um).
- SD : Standard Deviation, measures the distance either side of the average fibre diameter where approx 2/3 of the fibre diameters lie.
- CV : Coefficient of Variation = SD as a percentage of the average micron
- CE : Coarse Edge. The percentage of fibres that lie over 10 microns greater than the average fibre diameter.
- CF : Comfort Factor. The percentage of fibres less than 30 microns
- SF : Spinning Fineness. Combine Micron & CV to a single number to represent the spinning quality expressed in microns
- >30 : The percentage of fibres greater than 30 microns.
- CRV : Fibre Curvature is the average curvature or bending over one millimetre length. It is related to crimp frequency and is measured in degrees per millimetre (Dg/mm).
- SDC : Standard Deviation of Curvature is the variation of curvature for the above measurement. SDC is related to crimp definition and measured in degrees per millimetre (Dg/mm).
- TRIM : If sample is tested with Trim High ON, then the result is trimmed to 4 SD's above average FD. If sample average FD=22um and SD=5um then Trim High ON = 22+20=44um. Measurement above 44um is removed. Trim High OFF means no coarse tail trimming on the sample tested that gives a closer result to other instruments.
- GCF : Grease Correction Factor is the FD adjustment needed when measuring greasy Alpaca fibre - @ 20um-0.6um = 19.4