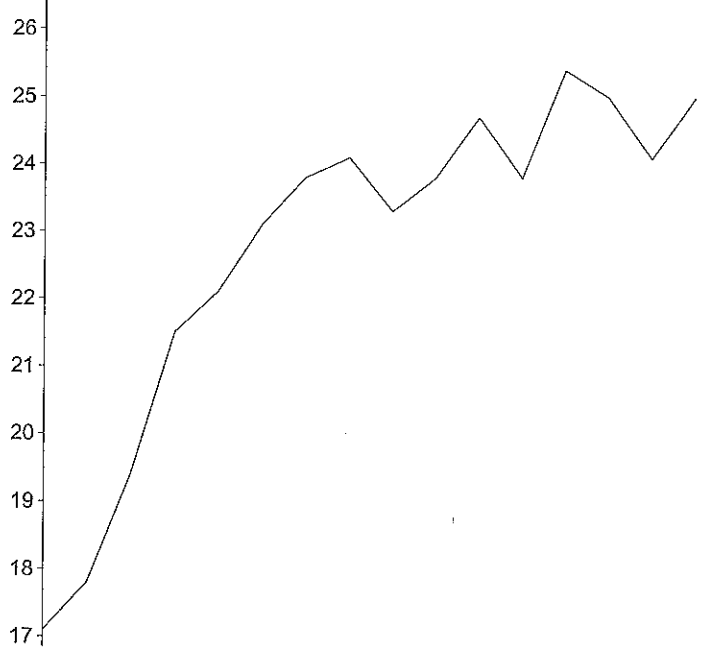
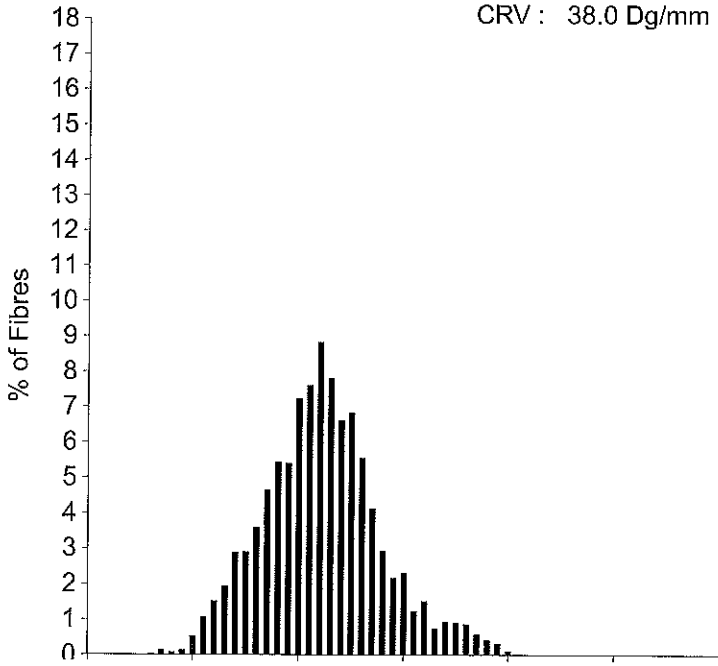


OFDA 2000 REPORT : SORTED BY TAG
alpaca nov 18 (153Records)

EarTag : lilly pilly
Micron : 22.2 mic
MicDev : -0.8 mic
SD : 5.6 mic
CVD : 25.2 %
CEM : 10.7 mic
CF : 92.4 %
SF : 22.5 mic
CRV : 38.0 Dg/mm

Staple Len : 80.0 mm
Finest Point From Tip : 0 mm
SD Along : 2.60 mic



alpaca nov 18 (153Records)
OFDA 2000 REPORT : SORTED BY TAG